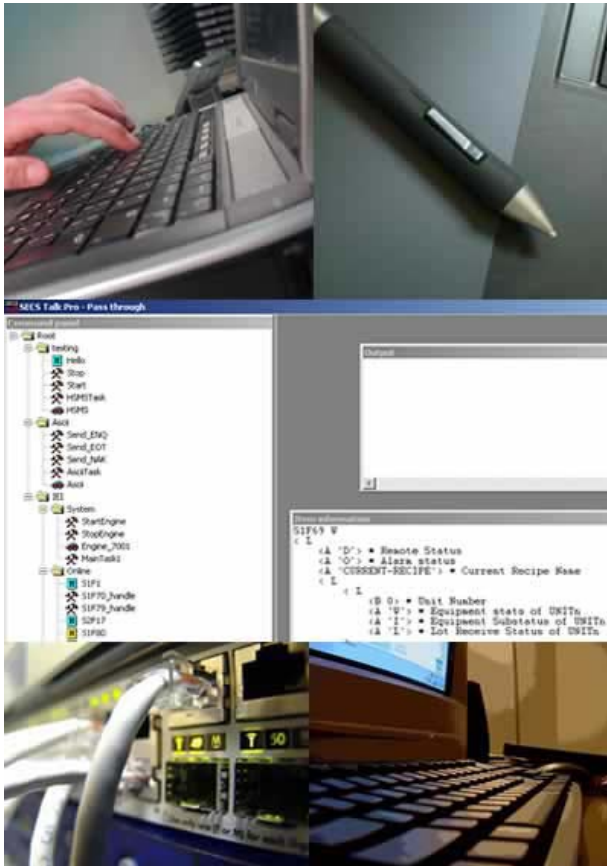




SECS Talk Pro[®] Product Brief



SECS-TALK Pro[®] is a SEMI standards compliant, multithreading and asynchronous communications package that supports multiple-block and multiple- transactional messaging.

- **SECS-TALK PRO** is compliant to the SEMI E4, E5, E30 and E37 Standards.
- **SECS-TALK PRO** supports local log file management systems.
- **SECS-TALK PRO** driver is supported on Win32 platforms, Windows NT SP6, Windows 2000 and Windows XP.

SECS TALK has a main engine (comprising a script compiler, threading engine, and the log file module) that is able to instantiate multiple communication engines, each with it's own unique scenario and logic that is dependant on the various different scripts and configuration.

The program logic of the various instances of communication engines are determined by the scripts and configurations.

Each engine interacts with the other communication engines via synchronous or asynchronous script calls. These engines share their program data through a global and local memory mechanism.

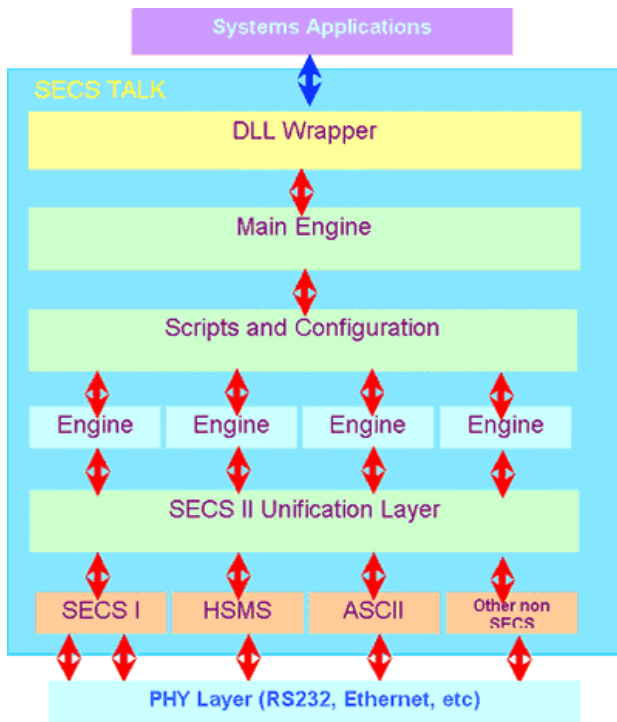
SECS TALK has a scalable architecture whereby the communications interface is designed to be expandable. Non-SECS protocol modules can easily be added at the communications interface level.

SECS TALK has a SECS II unification layer that will translate all interface messages into SECS II messages, thus making the scripts within the core engine consistent.

SECS TALK leverages on the latest systems paradigm in delivering a robust, scalable and expandable solution enabling complete data communications interface across plant wide CIM systems, for both SECS and non-SECS compliant equipment.



SECS TALK[®] Architecture



SECS Talk Pro[®] is a Windows-based package that provides an integrated development environment for users to write and test communications scripts based on our proprietary **SECS Talk** communications engine. It is an indispensable tool for performing communications testing and simulation.

SECS Talk Pro can be used as:

- A Fast Prototyping tool.
- Equipment or host simulator.
- SECS or ASCII Sniffer.
- Relay and pass-through for SECS, HSMS or other non-SECS conversion.
- Interlocking Controller.

All messages comply to SECS II standards and are communicated across the **SECS TALK** interface level for SECS-I, HSMS, ASCII or other such non-SECS compliant links.

Requirements and Compliance

SECS TALK is compliant with the following SEMI standards:

- E4 – 0699 (SECS – I)
- E5 – 1000 (SECS – II)
- E30 – 1000 (GEM)
- E37 – 0298 (HSMS)

OS:

- Win32 platforms
- Windows NT SP6
- Windows 2000
- Windows XP

Technical Support:

Updates from semi-integration web site
Technical Support by Email

Documentation:

On line user manual (HTML)
User manual (PDF format) by email request.

For further information or a demo package email to:
enquiry@semi-integration.com